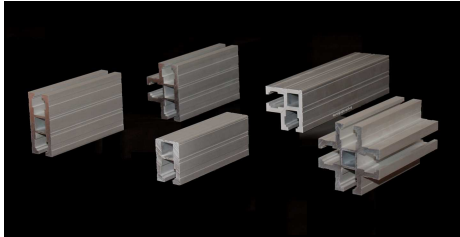


# DeepStream Designs

*Design Without Limits*



## Anti-Gravity Frame System



Five architectural shapes form the core of our system



A privacy screen on a rooftop terrace.



Signage option

### DeepStream Designs

2699 Tigertail Avenue, #54  
Miami, FL 33133

Phone: 305-857-0466  
Fax: 305-854-3218  
dsdmiami@gmail.com  
www.DeepStreamDesigns.com

You may not have worked with something this simple since you were a child!



Our Anti-Gravity Frame System allows you to draw it on a napkin and build it yourself, or fax your sketch to us for a quote and have your creation pre-fabricated and assembled to ensure everything works perfectly before shipping. Our catalog of patent pending architectural shapes with our unique panel capture system allows you to slide in rigid or soft panels from thin fabric to 1" thick.

- ◆ Create Wall Panels, Room Dividers, Cabanas, Pavilions & Soukahs, Kiosks & Desks, Railing Systems, Pool Enclosures, Screening Enclosures, Lighted Floor Grids and Signage.
- ◆ Sign design can be flat, open box, closed box, or backlit
- ◆ Incorporate gates, curtains, sliding panels, speakers, lighting, counters, signage, wiring.
- ◆ All components manufactured in the USA with OEM pricing directly to you.
- ◆ Can be assembled quickly using simple hand tools by unskilled labor. Can be taken down for seasonal or hurricane storage.
- ◆ Size limited only by panel dimensions
- ◆ Decorative panels can be replaced easily in case of damage or design change.
- ◆ Core replacement program provides replacement of damaged parts at manufacturer's cost.
- ◆ Reusable parts make design changes cost effective.
- ◆ Marine-anodized Aluminum legs, SS fasteners, HDPE Feet.